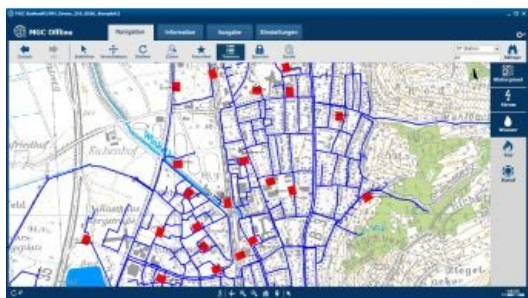


Mettenmeier Integrates TatukGIS into MGC View Offline App



Mettenmeier GmbH, an information technology service and consulting company specializing in know-how in the gas, water, and electricity industries, has integrated TatukGIS technology into its MGC View Offline application.

The TatukGIS technology provides lean and quick access to spatial data allowing the app to work more smoothly and reliably support work processes in the field with network data and to provide access to GIS data even to employees without online access.

Particularly in the sector of energy supply companies and network operators, ready access to network and cable data in offline mode is crucial for technicians performing on-site work. In many cases, this data must be available across all utilities and, therefore,

comprises lots of layers and themes and thousands of objects.

Since 2016, MGC View Offline has been rolled out to more than ten customers in the energy supply sector and presently supports more than 400 technicians in their daily work in the field. By means of the TatukGIS integration, this performance is also available in offline mode. The offline performance in a mobile environment has so far persuaded some larger customers to order customized, special purpose applications, such as for mobile damage capturing and fault clearing services coupled to a control system.

Though MGC View Offline runs on Windows, a consideration in the selection of the TatukGIS Developer Kernel (Delphi edition) for the development is its support for multiple operating systems. This allows Mettenmeier the flexibility to potentially later port this utility GIS application to macOS, iOS, Android, or Linux.

Learn more about Mettenmeier GmbH and its MGC View Offline App at <http://www.mettenmeier.com>

Learn more about the TatukGIS Developer Kernel (SDK) at <https://www.tatukgis.com/Products/DeveloperKernel/Description.aspx>